

WinFrog Device Group:	Sounder
Device Name/Model:	Reson SeaBat 81xx
Device Manufacturer:	RESON A/S Fabriksvangen 13, 3550 Slangerup, Denmark Tel: +45 4738 0022 E-Mail: reson@reson.dk Website: www.reson.com
Device Data String(s) Output to WinFrog:	Required: <ul style="list-style-type: none"> ○ R_THETA_DATA packets; or ○ RI_THETA_DATA packets Optional <ul style="list-style-type: none"> ○ SIDESCAN_IMAGE (for SONAR device) ○ SNP0, SNP1 (for SNIPPET device)
WinFrog Data String(s) Output to Device:	NONE
WinFrog Data Item(s) and their RAW record:	BOTTOMDEPTH 411, 911

DEVICE DESCRIPTION:

This device is designed to read time stamped bathymetry, sonar and snippet data from the Reson SeaBat 81xx multibeam echo sounder via UDP. This data can be logged to XTF files and used to create a coverage map. The BATHY mode of this device also provides the nadir depth as a BOTTOMDEPTH data item for association with a vehicle.

NOTE: A separate device is required to be added to WinFrog for each of the bathymetry, sonar and snippet data. The specific device is denoted in the device list by its application as follows:

- RESON 81xx-BATHY
- RESON 81xx-SNIPPET
- RESON 81xx-SONAR

NOTE: The precise data time stamp that is required for multibeam bathymetric surveys is provided by the Reson unit, not WinFrog.

DEVICE CONFIGURATION INSTRUCTIONS

WINFROG I/O DEVICES > EDIT I/O:

UDP only, configurable parameters.

Device Name: Enter the name for the device as it is to be displayed and logged.

Host Address: From the drop down list of available local Ethernet addresses, select the address that is on the respective network.

IP Address: Enter the Reson's UDP broadcast address.

Subnet Mask: Enter the appropriate subnet mask.

Port Number: Enter the Reson's port number for the respective data type. The default port numbers are as follows:

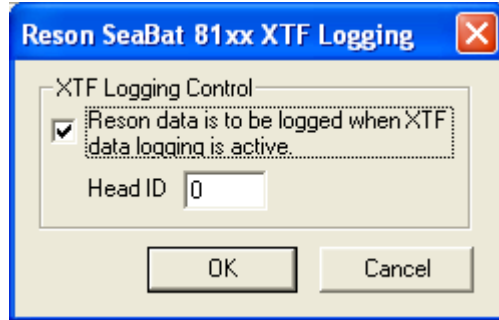
- RESON 81xx-BATHY UDP Base + 0
- RESON 81xx-SNIPPET UDP Base + 6
- RESON 81xx-SONAR UDP Base + 1

where the Reson UDP Base default is 1028.

The screenshot shows a dialog box titled "Reson 8101 Interface". It has three main sections: "Connect Using", "IP Configuration", and "Connection Options". In the "Connect Using" section, there are three radio buttons: "Serial", "TCP/IP", and "UDP/IP", with "UDP/IP" selected. The "IP Configuration" section contains five text boxes: "Device Name" with "RESON 8101-BATHY", "Host Address" with a dropdown menu showing "172.20.212.51", "IP Address" with "127.0.0.1", "Subnet Mask" with "255.255.255.0", and "Port Number" with "1028". The "Connection Options" section has a heading "Select the connection type." and two radio buttons: "Listen" (selected) and "Call". Below them is a "Timeout" field with "60s". At the bottom of this section is a "Disconnect" checkbox which is unchecked. At the very bottom of the dialog are "OK" and "Cancel" buttons.

WINFROG I/O DEVICES > CONFIGURE DEVICE:

The configuration for this device at the I/O Device window level allows you to specify if the data is to be logged to the XTF file. In the I/O Devices window, click the device name to select it, then right-click, select Configure Device and the Reson SeaBat 81xx XTF Logging dialog opens.



If the data is to be logged to the XTF file when MBES data logging is active, check the box. If not, uncheck the box.

The Head ID is used to identify a specific MBES sonar head. For single head use this value should be 0. For dual head use the port sonar ID is 0 and the starboard head ID is 1.

WINFROG VEHICLE > CONFIGURE VEHICLE DEVICES > DEVICE DATA ITEM > EDIT:

Adding the Reson 81xx-BATHY device creates one data item: BOTTOMDEPTH. This extracts the nadir depth from the data and uses it as a single frequency echo sounder data item.

The data item does not require configuration once it has been added to the vehicle.

The Reson 81xx-SONAR and Reson 81xx-SNIPPET devices do not support any data items.